

World Markets	Current	Previous	Pt. Chg	Var(%)
Dow	39376	39308	68	0.2%
Dow Futures	39630	39695	(65)	-0.2%
Nasdaq	18353	18188	165	0.9%
FTSE	8204	8241	(37)	-0.4%
Nikkei	41000	40912	88	0.2%
Hang Seng	17573	17800	(227)	-1.3%
Gift Nifty	24391	24410	(19)	-0.1%
Straits Singapore	3406	3411	(5)	-0.1%
South Korea	2859	2862	(3)	-0.1%
Taiwan	23902	23557	345	1.5%
Shanghai	2934	2950	(16)	-0.5%

Commodity Prices	Current	Previous	Pt. Chg	Var(%)
Copper (\$/MT)	9944	9883	61.0	0.6%
Alumin (\$/MT)	2536	2523	13.0	0.5%
Zinc (\$/MT)	3001	2987	14.0	0.5%
Brent Crude (\$/bbl)	86.0	87.0	(1.0)	-1.1%
Gold (\$/Ounce)	2382	2392	(10.0)	-0.4%
Silver (\$/Ounce)	31.0	31.0	0.0	0.0%
Light Crude (\$/bbl)	83.0	83.0	0.0	0.0%
N G (\$/mmbtu)	2.0	2.0	0.0	0.0%
Sugar (\$/MT)	572.0	577.0	(5.0)	-0.9%
Rubber (Rs./kg)	206.0	206.0	0.0	0.0%
Baltic Dry Index	1966	2021	(55.0)	-2.7%

Currency Exchange Rate	Current	Previous	Var(%)
Rs./\$ rate	83.49	83.50	-0.01%
Rs./ Euro	90.39	90.16	0.26%
Rs./Chinese Yuan	11.49	11.49	0.00%
Yen /\$ rate	160.34	160.75	-0.26%
\$ US/Euro	1.08	1.08	0.00%

Dollar Index	Current	Previous	Var(%)
Dollar Index	105.26	105.28	-0.02%

Support/ Resistance Levels for Today		
	Nifty	Bank Nifty Fut
Support 1	24240	52340
Support 2	24170	51970
Resistance	24400	53040

Securities in Ban For Trade	
ABFRL	BANDHANBNK
HINDCOPPER	INDIACEM
PEL	GNFC

Market Review

US: The US stock market ended the week at all-time highs with traders focusing on prospects for Federal Reserve rate cuts.

Asia: Most markets in Asia-Pacific region were trading lower with Hong Kong's Hang Seng falling the most by over 1%. Japan's Nikkei and South Korea's KOSPI traded 0.1% lower.

India: Indian benchmarks rose for the fifth week to record the best streak of weekly gains in over six months. Meanwhile, the indices erased loss during the last leg of trade on Friday, tracking gains in shares of RIL, SBI, and L&T. **Market is expected to open on a flattish note and likely to witness range bound move during the day.**

Global economy: Japan's current account surplus grew for the 15th straight month in May as a record primary income surplus more than offset the trade deficit, the Ministry of Finance said on Monday, reflecting an ongoing shift of the country's sources of earnings. The current account grew to 2.85 trillion yen (\$17.74 billion) in May, compared with a median forecast from economists for a surplus of 2.45 trillion yen and the prior month's 2.05 trillion yen surplus.

The U.S. economy added more jobs than anticipated in June, although the figure was lower than the prior month, pointing to a possible cooling in labor demand in the world's largest economy. Nonfarm payrolls came in at 206,000 last month, down from 218,000 in May, according to Labor Department data on Friday. The May reading was also revised down heavily from an initial mark of 272,000, while April's was lowered by 57,000 to 108,000.

Commodities: gold prices held near one-month highs at \$2,385 an ounce.

Oil prices moved sideways in Asian trade on Monday as traders watched for the impact of tropical storm Beryl on oil production in the Gulf of Mexico, while focus also remained on more signs of strong summer demand.

Currency: The U.S. dollar retreated in early European trade ahead of the key monthly jobs report, while sterling edged higher after the result of the U.K general election.

FII Derivative Transactions (Rs. Cr)

Contracts	Purchase		Sell		Net	Open Interest (OI)		OI (Previous day)		Change	
	Contract	Value	Contract	Value	Value	Contract	Value	Contract	Value	Contract	Value
Index Future	36030	2430	43853	2926	(496)	567776	36981	580607	37869	(12831)	(888)
Index Option	16224760	1159983	15687686	1125360	34623	5491278	375142	3808632	261909	1682646	113233
Stock Future	320214	25186	320296	25517	(331)	4086688	317033	4028456	311538	58232	5495
Stock Option	525682	42845	528163	42979	(134)	470694	37326	431855	34086	38839	3240
Total	17106686	1230444	16579998	1196782	33662	10616436	766482	8849550	645402	1766886	121080

FII All Activity-BBG (Rs Cr)	Buy	Sell	Net
28-Jun-24	22819	21266	1553
1-Jul-24	13688	14182	(494)
2-Jul-24	14544	17051	(2507)
3-Jul-24	16500	12602	3899
4-Jul-24	16289	10778	5512
Month to date- July	61021	54612	6409
FII (Prov.) (Rs Cr)	Buy	Sell	Net
1-Jul-24	13206	13632	(426)
2-Jul-24	14551	16551	(2000)
3-Jul-24	18024	12540	5484
4-Jul-24	13837	11261	2576
5-Jul-24	13354	12113	1241
Month to date-July	72973	66098	6875
DII (Prov.) (Rs. Cr)	Buy	Sell	Net
1-Jul-24	16210	12293	3917
2-Jul-24	14203	13555	648
3-Jul-24	14121	15046	(924)
4-Jul-24	11303	13679	(2375)
5-Jul-24	12695	14346	(1651)
Month to date-July	68533	68918	(385)
FII Debt - BBG (Rs. Cr)	Buy	Sell	Net
28-Jun-24	5267	3060	2207
1-Jul-24	2133	970	1163
2-Jul-24	2661	2358	302
3-Jul-24	1812	1112	699
4-Jul-24	2414	481	1933
Month to date- July	9019	4922	4097

Market Breadth	BSE		NSE	
	No.	%	No.	%
Advance	2162	54%	1543	57%
Decline	1772	44%	1114	41%
Unchanged	82	2%	52	2%

Market Turnover	05-Jul	04-Jul	Var (%)
BSE Cash	13465	10569	27%
NSE Cash	155674	138453	12%
NSE Futures	149838	142651	5%
NSE Options	13476275	39561238	-66%
Total (Rs.Cr)	13795252	39852912	-65%

Volatility Index	05-Jul	04-Jul
Volatility Index	12.70	12.86

Index PE - TTM	05-Jul	Yr. High	Yr. Low
Sensex	24.3	26.0	21.8
Nifty	23.2	28.8	20.3

Corporate News

Tata Steel's consolidated sales rise 4% in Q1

The company's India crude steel production saw a 5% year-on-year jump at 5.25 million tonnes in the first quarter of this fiscal. However, the production was lower sequentially due to planned maintenance shutdowns. Tata Steel Ltd.'s Indian deliveries grew 3% year-on-year to 4.94 million tonne, which according to an exchange filing on Saturday is the best-ever first-quarter sales.

KPI Green Energy inks pact to supply power from 50MW hybrid project

KPI Green Energy Limited has successfully inked a Power Purchase Agreement with Gujarat Urja Vikas Nigam Limited for a 50MW Solar-Wind Hybrid Power Project. This project, combining 50 MW of Solar and 16.80 MW of Wind energy. The project underscores KPI Green Energy's commitment to expanding renewable energy infrastructure in India(ET)

Economy

Onion supply comfortable in domestic market, retail prices stabilizing

The government said the availability of onion in the domestic market is comfortable and retail prices are stabilising. In a statement, Ministry of Consumer Affairs, Food & Public Distribution said onion crops is estimated to rise 27 per cent in kharif season. As per the assessment of Ministry of Agriculture, the area targeted for kharif sowing of major vegetables namely, onion, tomato and potato has seen significant increase over last year. (ET)

India's coal import rises 5 pc to 52 MT in April-May

India's coal imports increased by 5.3% to 52.29 million tonnes in April-May FY24, compared to the previous year. However, May imports dropped slightly to 26.19 MT from 26.57 MT last year. Despite potential import demand slowing due to monsoons and rising coking coal prices, domestic production remains robust.(ET)

International

Samsung workers' union in South Korea kicks off three-day strike

A workers' union at Samsung Electronics in South Korea is set to stage a three-day strike from Monday and has warned it could take further action against the country's most powerful conglomerate at a later date. The National Samsung Electronics Union, whose roughly 28,000 members make up over a fifth of the firm's workforce in South Korea, is demanding the company improve its performance-based bonus system and give workers an extra day of annual leave. (ET)

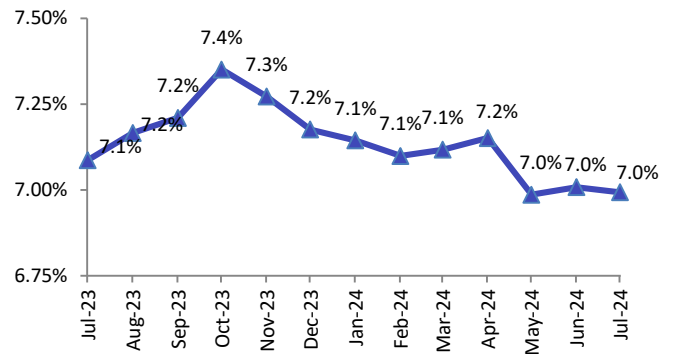
Top 5 Nifty Gainers	05-Jul	04-Jul	Var(%)
ONGC	288	277	4.0%
SBIN	860	839	2.4%
RELIANCE	3177	3108	2.2%
BRITANNIA	5547	5426	2.2%
HINDUNILVR	2547	2496	2.0%
Top 5 Nifty Losers	05-Jul	04-Jul	Var(%)
HDFCBANK	1648	1727	-4.6%
TITAN	3269	3336	-2.0%
TATASTEEL	175	176	-0.9%
M&M	2881	2903	-0.8%
LTIM	5422	5460	-0.7%

BSE Index Watch	Last	1 day	1 wk	1 mth	1 yr
SENSEX	79997	-0.1%	1.2%	4.3%	22.5%
MIDCAP	47438	0.8%	2.8%	7.5%	63.6%
SMLCAP	54154	0.7%	3.9%	11.1%	63.5%
AUTO	57826	0.1%	0.9%	2.1%	62.2%
BANKEX	60332	-0.2%	1.2%	6.3%	18.9%
Capital Goods	75131	1.5%	3.9%	9.1%	84.7%
FMCG	20927	1.0%	1.8%	0.2%	10.2%
Health Care	38247	1.0%	3.1%	5.4%	47.4%
IT	38483	-0.1%	4.1%	7.2%	29.0%
METAL	33739	0.4%	2.1%	1.4%	62.8%
Oil & Gas	30152	1.8%	2.3%	5.4%	58.3%
Power	8095	1.2%	1.8%	5.6%	99.9%
Realty	8741	0.0%	1.2%	4.5%	105.6%

NSE USD Futures	05-Jul	04-Jul	Var (%)
July Expiry (Rs./\$)	83.56	83.56	0.0%
August Expiry (Rs./\$)	83.89	83.89	0.0%
Total Turnover (Rs. Crore)	1186	981	21%

Sectors	TTM PE
Auto	34.51
Auto Ancillary	55.38
Banking	15.95
Engineering	45.01
Cement	74.65
Diamonds & Jewellery	66.09
Housing Finance	25.47
Infrastructure & Const	33.16
Metals-Aluminium	42.66
Metal – Steel	19.77
Oil Expl.	17.52
Pharma	10.61
Power – Gen. Supp.	42.2
Information Tech.	25.53
Sugar	20.08
Telecom Serv. Prov.	86.94
Tyres	28.45

India 10 year bond yield (Source: Investing.com)



10 year G-Sec Yield	Current	Previous	Change
US	4.29%	4.28%	1 bps
Japan	1.09%	1.08%	1 bps
India	6.99%	7.00%	(1) bps
UK	4.13%	4.20%	(7) bps
Libor 3 Mths	5.57%	5.58%	(1) bps

Indian Eco Data	Current	Previous	Var(%)
Forex Reserve (US\$ in bn)	654	652	0.3%
Inflation - WPI	2.61%	1.26%	135 bps
Inflation - CPI	4.75%	4.83%	(8) bps

India GDP	Q4FY24	Q3FY24	Var(%)
Growth	7.76%	8.57%	(81) bps

Monetary Policy	Current	Previous	Change
Repo Rate	6.50%	6.50%	0 bps
Reverse Repo Rate	3.35%	3.35%	0 bps
CRR	4.50%	4.50%	0 bps
O/S Banking System Liquidity (Rs bn)	1497	1276	221.2

IIP Growth %	Jan-24	Jan-23	Apr-Feb
IIP	5.0	4.6	6.3
Mining	5.9	9.0	8.5
Manufacturing	3.2	4.5	5.7
Electricity	5.6	12.7	7.0

ADR Price Movement

Company	Price (US\$)	Volume	Previous Day Price	Volume	Variance (%)	No. of Share Per ADR	ADR Price (Rs.)	BSE Price	Variance (%)
Infosys Tech	19.43	7709818	19.37	7252432	0.31%	1	1622.28	1647.45	-1.5%
Wipro	6.38	1706230	6.38	1041571	0.00%	1	532.69	535.10	-0.5%
Dr.Reddy's	78.04	144324	76.05	161726	2.62%	1	6515.85	6520.00	-0.1%
ICICI Bank	29.23	7044156	28.85	2031130	1.32%	2	1220.26	1233.40	-1.1%
HDFC Bank	61.89	4587992	66.64	2314936	-7.13%	3	1722.48	1648.10	4.5%

GDR's (US\$)

	Prices	Prev. Close	Change	Var %
L&T	43.70	43.00	0.7	1.6%
RIL	76.30	74.30	2.0	2.7%
SBI	102.00	100.20	1.8	1.8%

US Economy Data

	Current	Previous
Inflation (YoY)	3.30%	3.40%
Unemployment (%)	4.10%	4.00%

Interest Rate (%)

	Current	Previous
Fed Rate	5.50%	5.50%

US GDP

	Q1CY24	Q4CY23	Q4CY22
Growth (QoQ Annualized)	1.40%	3.40%	2.60%

China Economy Data

	Current	Previous
GDP	5.30%	5.20%
Inflation – CPI (%)	0.30%	0.30%

Economic Calendar

	Date
Indian GDP Data	30 Aug
Indian Inflation Data CPI	12 Jul
Indian Inflation Data WPI	15-Jul
Indian Monetary Policy	08 Aug
India's Industrial Production (IIP)	12 Jul
US Inflation Data	11 Jul
US GDP	25 Jul
US Unemployment Data	02 Aug
US Fed Rate	31 Jul
China GDP	15 Jul
China Inflation Data	10 Jul

Event Update

Name	Date	Purpose
Clara Industries Ltd.	08-07-2024	Bonus issue
DCM Shriram Ltd.	09-07-2024	Rs.2.60 per share(130%)Final Dividend
Deep Industries Ltd.	09-07-2024	Rs.2.44 per share(48.8%)Final Dividend
Lagnam Spintex Ltd.	09-07-2024	Dividend
Bridge Securities Ltd.	10-07-2024	Stock Split from Rs.10/- to Re.1/-
PG Electroplast Ltd.	10-07-2024	Stock Split from Rs.10/- to Re.1/-
Alliance Integrated Metaliks Ltd.	11-07-2024	Bonus issue
Oriental Hotels Ltd.	11-07-2024	Rs.0.50 per share(50%)Dividend
Raymond Ltd.	11-07-2024	Spin Off
Route Mobile Ltd.	11-07-2024	Rs.2.00 per share(20%)Final Dividend
Sinclairs Hotels Ltd.	11-07-2024	Rs.1.00 per share(50%)Final Dividend
Sky Industries Ltd.	11-07-2024	Rs.1.00 per share(10%)Final Dividend
20 Microns Ltd.	12-07-2024	Rs.1.25 per share(25%)Final Dividend
AU Small Finance Bank Ltd.	12-07-2024	Rs.1.00 per share(10%)Final Dividend
Axis Bank Ltd.	12-07-2024	Rs.1.00 per share(50%)Final Dividend
Birlasoft Ltd.	12-07-2024	Rs.4.00 per share(200%)Final Dividend
DK Enterprises Global Ltd.	12-07-2024	Dividend
Indian Oil Corporation Ltd.	12-07-2024	Rs.7.00 per share(70%)Final Dividend
IRM Energy Ltd.	12-07-2024	Rs.1.50 per share(15%)Final Dividend
Jubilant FoodWorks Ltd.	12-07-2024	Rs.1.20 per share(60%)Final Dividend
Petronet LNG Ltd.	12-07-2024	Rs.3.00 per share(30%)Final Dividend
Piramal Pharma Ltd.	12-07-2024	Rs.0.11 per share(1.1%)Final Dividend
Polychem Ltd.	12-07-2024	Rs.30.00 per share(300%)Final Dividend

Bulk Deal As On 05/07/24

BSE

Security Code	Security Name	Client Name	Deal	Quantity	Price
539277	ALSTONE	SAHASTRAA ADVISORS PRIVATE LIMITED	S	6800000	0.97
539277	ALSTONE	TOPGAIN FINANCE PRIVATE LIMITED	S	13095197	0.94
539277	ALSTONE	TOPGAIN FINANCE PRIVATE LIMITED	B	95197	0.94
531991	AMRAAGRI	YUGA STOCKS AND COMMODITIES PRIVATE LIMITED .	S	982128	1.3
542176	ARYAN	LALITHKUMAR SAJJANRAJ	B	19999	19.96
542176	ARYAN	ZUBER TRADING LLP	S	20535	19.96
512149	AVANCE	KINITA REAL ESTATE PRIVATE LIMITED	S	95366660	1
512149	AVANCE	MULTIPLIER SHARE & STOCK ADVISORS PRIVATE LIMITED	B	20000000	0.99
512149	AVANCE	SAHASTRAA ADVISORS PRIVATE LIMITED	S	8171737	1.06
512149	AVANCE	SAHASTRAA ADVISORS PRIVATE LIMITED	B	15251519	1.04
512149	AVANCE	SETU SECURITIES PVT. LTD.	B	23499000	1
512149	AVANCE	TOPGAIN FINANCE PRIVATE LIMITED	S	12004224	1.03
512149	AVANCE	TOPGAIN FINANCE PRIVATE LIMITED	B	22002123	1.02
531752	BIOGEN	JAI VINAYAK SECURITIES	S	3620035	1.7
531752	BIOGEN	JAI VINAYAK SECURITIES	B	3274609	1.72
530249	BRIDGESE	GLOBALWORTH SECURITIES LIMITED	B	18097	36.51
534758	CIGNITITEC	COFORGE LIMITED	B	4618199	1398.5
534758	CIGNITITEC	COFORGE LIMITED	B	313549	1398.5
534758	CIGNITITEC	COFORGE LIMITED	B	1377348	1398.5
534758	CIGNITITEC	COFORGE LIMITED	B	1377348	1398.5
534758	CIGNITITEC	COFORGE LIMITED	B	1549954	1398.5
534758	CIGNITITEC	KUKUNURU KUMAR BAPUJI	S	313549	1398.5
534758	CIGNITITEC	KUKUNURU KUMAR BAPUJI	S	313549	1398.5
534758	CIGNITITEC	KUKUNURU MADHAVA LAKSHMI	S	1549954	1398.5
534758	CIGNITITEC	KUKUNURU MADHAVA LAKSHMI	S	1549954	1398.5
534758	CIGNITITEC	SAPNA P	S	1377348	1398.5
534758	CIGNITITEC	SAPNA P	S	1377348	1398.5
534758	CIGNITITEC	VENKATA SUBRAMANYAM CHAKKILAM	S	1377348	1398.5
534758	CIGNITITEC	VENKATA SUBRAMANYAM CHAKKILAM	S	1377348	1398.5
540204	EIKO	ARITRO ASHISH ROY	S	107415	51
531502	ESARIND	JIGNA V DESAI	S	105003	6.62
543500	EVOQ	NEETA TAYAL	S	80000	10.48
532379	FIRSTFIN	SHAH DIPAK KANAYALAL	B	60000	9.81
540614	GGENG	MULTIPLIER SHARE & STOCK ADVISORS PRIVATE LIMITED	S	3352020	2.64
540614	GGENG	MULTIPLIER SHARE & STOCK ADVISORS PRIVATE LIMITED	B	7500278	2.72
540614	GGENG	SETU SECURITIES PVT. LTD.	S	13408520	2.73
540614	GGENG	SETU SECURITIES PVT. LTD.	B	13408520	2.66
530263	GLOBALCA	CHANDAN CHAURASIYA	S	2280628	0.95
531913	GOPAIST	ARCHEE SHARMA	S	40710	7.76
531913	GOPAIST	SUMANCHEPURI	B	25308	7.71
514386	GUJCOTEX	SITA RAM MEENA	S	82542	6.78
513337	GUJTLRM	SHUBHAM ASHOKBHAI PATEL	S	500000	13.93
509631	HEG	QUANT MUTUAL FUND	S	950000	2260
540377	IFL	ANKIT MAHENDRABHAI PARLESHA	S	2924398	1.47
540134	IISL	GAYATHRIRADHAKRISHNAN	B	43775	9.01
543806	ITCONS	VEDANSH MEHTA	B	26000	168.66
532154	JOHNPHARMA	MULTIPLIER SHARE & STOCK ADVISORS PRIVATE LIMITED	S	6777253	1.19
535730	KHOBSURAT	CHANDAN CHAURASIYA	B	5095171	1.33
535730	KHOBSURAT	MULTIPLIER SHARE & STOCK ADVISORS PRIVATE LIMITED	S	5000000	1.32
535730	KHOBSURAT	RATHOD MANOJ CHHAGANLAL HUF	S	3154903	1.38

541337	MILEFUR	MULTIPLIER SHARE & STOCK ADVISORS PRIVATE LIMITED	S	84000	7.6
523373	MINID	MULTIPLIER SHARE & STOCK ADVISORS PRIVATE LIMITED	S	24896	80.96
523373	MINID	PRANITH REALITIES LLP	B	22523	82
523373	ONTIC	ASHISH N SHAH	S	511349	0.62
540386	ONTIC	NOBLE POLYMERS LIMITED NOBLE	S	583974	0.6
526345	PANJON	MONOTYPE INDIA LIMITED	S	100000	23.4
539561	REMLIFE	CNM FINVEST PRIVATE LIMITED .	S	1806832	20.94
539561	REMLIFE	JITESHKUMAR SHASHIKANTBHAI TIKADIYA	S	1353295	20.94
514010	RUDRAECO	ANIL VISHANJI DEDHIA	B	500000	72.38
514010	RUDRAECO	MULTIPLIER SHARE & STOCK ADVISORS PRIVATE LIMITED	S	623957	72.89
544170	SAI	SOMANI VENTURES AND INNOVATIONS LIMITED	S	46000	55.16
531893	SAWABUSI	MAHADEV MANUBHAI MAKVANA	S	4900000	0.79
531893	SAWABUSI	SETU SECURITIES PVT. LTD.	S	4105457	0.73
511760	SEVENHILL	MULTIPLIER SHARE & STOCK ADVISORS PRIVATE LIMITED	S	880000	1.39
511760	SEVENHILL	MULTIPLIER SHARE & STOCK ADVISORS PRIVATE LIMITED	B	1700127	1.32
511760	SEVENHILL	RAVINDER KUMAR GUPTA	S	1500000	1.36
511760	SEVENHILL	SANJAY KHANDELWAL	B	1100000	1.38
538667	SIROHIA	MULTIPLIER SHARE & STOCK ADVISORS PRIVATE LIMITED	S	60000	14.2
538667	SIROHIA	MULTIPLIER SHARE & STOCK ADVISORS PRIVATE LIMITED	B	30000	14.2
526479	SKYIND	PRAVIN SHRIPAD BHALERAO	B	47000	109.91
543924	SONALIS	DARSHAN UMESH THAKKAR	S	10000	52.22
543828	SUDARSHAN	SHERWOOD SECURITIES PVT LTD	S	232000	84
543828	SUDARSHAN	SHERWOOD SECURITIES PVT LTD	B	1600	81.85
542025	SUNRETAIL	MOHANRAMESH	S	3216000	1.1
542025	SUNRETAIL	PALANISWAMY PRABHU	S	1680000	1.1
542765	TRANSPACT	GHADIALLY FAISAL ZOHEB	S	3000	281
542765	TRANSPACT	ISHANN MITTAL	S	1000	317.5
542765	TRANSPACT	ISHANN MITTAL	B	2000	307
542765	TRANSPACT	NIRALI VIJAYBHAI SHAH	B	2000	281.5
539040	TTIL	AVANCE VENTURES PRIVATE LIMITED	B	250000	22.52
539040	TTIL	INTERTICK DEVELOPERS PRIVATE LIMITED	B	250000	22.84
539040	TTIL	INTEX COMMOSALES LLP	S	418456	22.52
539040	TTIL	MULTIPLIER SHARE & STOCK ADVISORS PRIVATE LIMITED	B	475000	22.53
539040	TTIL	NIKHILESH TRADERS LLP .	S	477000	22.53
539040	TTIL	NIRAJ RAJNIKANT SHAH	B	200000	22.52
539040	TTIL	RAJAN GUPTA	S	173794	22.93
500426	UTLINDS	DHERARAM MADHULAL	B	200000	4.7
512175	VAMA	GREEN PEAKS ENTERPRISES LLP	S	524685	10.22
512175	VAMA	GREEN PEAKS ENTERPRISES LLP	B	58767	10.22
512175	VAMA	MULTIPLIER SHARE & STOCK ADVISORS PRIVATE LIMITED	S	863500	10.2
512175	VAMA	PRAVEEN ARORA	B	400000	10.22
533427	VMS	QMIN INDUSTRIES LIMITED	S	271189	43.88
533427	VMS	SATISH KUMAR GUPTA (HUF)	S	235513	43.9
523650	YASHINNO	ASHOKKUMAR RAJESHBHAI SOLANKI	S	39264	20.79

NSE

Security Code	Security Name	Client Name	Deal	Quantity	Price
BAJAJHCARE	Bajaj Healthcare Limited	MAA SHARDA DISTRIBUTORS PRIVATE LIMITED	SELL	1000000	316.95
BEML	BEML Limited	NK SECURITIES RESEARCH PRIVATE LIMITED	SELL	314038	5193.62
CIGNITITEC	Cigniti Technologies Ltd	RAJASTHAN GLOBAL SECURITIES PVT LTD	BUY	155857	1371.6
CMMIPL	CMM Infraprojects Limited	DEVDHAR JAIN	BUY	90000	2.25
DELAPLEX	Delaplex Limited	MAYURI SHRIPAL VORA	BUY	49200	311.6
GICL	Globe Intl Carriers Ltd	MAHEVARSH FINCON PRIVATE LIMITED	BUY	189000	48.9
GLOBE	Globe Textiles (I) Ltd.	SANTOSH SITARAM GOENKA	SELL	2986470	3.96
HEG	HEG Ltd	QUANT MUTUAL FUND	SELL	912211	2260
INOXGREEN	Inox Green Energy Ser Ltd	DOVETAIL INDIA FUND	SELL	2065272	168.19
MANDEEP	Mandeep Auto Industries L	PADMABEN MUKESHBHAI PATEL	BUY	100000	71.33
MANDEEP	Mandeep Auto Industries L	RAKESHKUMAR OMPRAKASHBHAI PATEL	BUY	126000	71.14
MASON	Mason Infratech Limited	JITENDRA MULARAM CHOUDHARY	SELL	140000	112.2
MASON	Mason Infratech Limited	MANSI SHARE AND STOCK ADVISORS PVT LTD	BUY	160000	112.12
MASON	Mason Infratech Limited	ROHAN GUPTA	BUY	88000	110.83
MEDPLUS	Medplus Health Serv Ltd	PI OPPORTUNITIES FUND - I	SELL	2941176	680
NARMADA	Narmada Agrobases Limited	GAIKWAD ANAND SNEHAL	SELL	118059	24.33
NARMADA	Narmada Agrobases Limited	LAXMI VYANKATESH ENTERPRISES	SELL	70868	24.82
NEPHROCARE	Nephro Care India Limited	CINCO STOCK VISION LLP	BUY	161600	171
NEPHROCARE	Nephro Care India Limited	MULTIPLIER SHARE & STOCK ADVISORS PRIVATE LIMITED	BUY	160000	179.55
NEPHROCARE	Nephro Care India Limited	STATSOL RESEARCH LLP	BUY	128000	179.55
SEPC-RE2	SEPC Limited	BANK OF INDIA	SELL	2639025	4.08
SEPC-RE2	SEPC Limited	NISHA JITEN SHETH	BUY	1000000	4.56
SEPC-RE2	SEPC Limited	NITESH HISSARIA	BUY	1900000	4.55
SEPC-RE2	SEPC Limited	PUNJAB NATIONAL BANK	SELL	4100000	4.5
SEPC-RE2	SEPC Limited	THE SOUTH INDIAN BANK LIMITED	SELL	3133941	4.5
SEPC-RE2	SEPC Limited	UNION BANK OF INDIA	SELL	1620000	4.67
SUNDARAM	Sundaram Multi Pap Ltd	SURAJ TUKARAM BAVISKAR	SELL	2377375	3.6
SYLVANPLY	Sylvan Ply board (India) L	VISHAL BIPINKUMAR DOSHI	SELL	100000	73.72
TCIFINANCE	TCIFinanceLtd-Roll Sett	MULTIPLIER SHARE & STOCK ADVISORS PRIVATE LIMITED	SELL	75000	17.58
VISAMAN	Visaman Global Sales Ltd	VISHAL BIPINKUMAR DOSHI	SELL	180000	42.18

Disclosure:

Research Reports that are published by Nirmal Bang Securities Private Limited (hereinafter referred to as “NBSPL”) are for private circulation only. NBSPL is a registered Research Analyst under SEBI (Research Analyst) Regulations, 2014 having Registration no. INH000001766. NBSPL is also a registered Stock Broker with National Stock Exchange of India Limited, BSE Limited, Metropolitan Stock Exchange of India Limited, Multi Commodity Exchange of India Limited and , National Commodity and Derivative Exchange Limited in Capital Market , Equity and Commodities derivatives segments and Currency Derivatives Segment .

NBSPL has other business divisions with independent research teams separated by Chinese walls, and therefore may, at times, have different or contrary views on stocks and markets.

NBSPL or its associates have not been debarred / suspended by SEBI or any other regulatory authority for accessing / dealing in securities Market since last 20 years. NBSPL, its associates or analyst or his relatives do not hold any financial interest (Except Investment) in the subject company. NBSPL or its associates or Analyst do not have any conflict or material conflict of interest at the time of publication of the research report with the subject company. NBSPL or its associates or Analyst or his relatives may or may not hold beneficial ownership of 1% or more in the subject company at the end of the month immediately preceding the date of publication of this research report.

NBSPL or its associates / analyst has not received any compensation / managed or co-managed public offering of securities of the company covered by Analyst during the past twelve months. NBSPL or its associates have not received any compensation or other benefits from the company covered by Analyst or third party in connection with the research report. Analyst has not served as an officer, director or employee of Subject Company. NBSPL / analyst has not been engaged in market making activity of the subject company.

Analyst Certification: The research analysts and authors of these reports, hereby certify that the views expressed in this research report accurately reflects my/our personal views about the subject securities, issuers, products, sectors or industries. It is also certified that no part of the compensation of the analyst(s) was, is, or will be directly or indirectly related to the inclusion of specific recommendations or views in this research. The analyst(s) principally responsible for the preparation of this research report and has taken reasonable care to achieve and maintain independence and objectivity in making any recommendations.

Disclaimer:

The Research Report is for the personal information of the authorized recipient and does not construe to be any investment, legal or taxation advice. NBSPL is not soliciting any action based upon it. Nothing in the research report shall be construed as a solicitation to buy or sell any security or product, or to engage in or refrain from engaging in any such transaction. In preparing the research report, we did not take into account the investment objectives, financial situation and particular needs of the reader.

The research report has been prepared for the general use of the clients of NBSPL and must not be copied, either in whole or in part, or distributed or redistributed to any other person in any form. If you are not the intended recipient you must not use or disclose the information in the research report in any way. Though disseminated to all the customers simultaneously, not all customers may receive the research report at the same time. NBSPL will not treat recipients as customers by virtue of their receiving the research report. The research report is not directed or intended for distribution to or use by any person or entity resident in a state, country or any jurisdiction, where such distribution, publication, availability or use would be contrary to law, regulation or which would subject NBSPL & its group companies to registration or licensing requirements within such jurisdictions.

The report is based on the information obtained from sources believed to be reliable, but we do not make any representation or warranty that it is accurate, complete or up-to-date and it should not be relied upon as such. We accept no obligation to correct or update the information or opinions in it. NBSPL or any of its affiliates or employees shall not be in any way responsible for any loss or damage that may arise to any person from any inadvertent error in the information contained in the research report. NBSPL or any of its affiliates or employees do not provide, at any time, any express or implied warranty of any kind, regarding any matter pertaining to this report, including without limitation the implied warranties of merchantability, fitness for a particular purpose, and non-infringement. The recipients of the research report should rely on their own investigations.

This information is subject to change without any prior notice. NBSPL reserves its absolute discretion and right to make or refrain from making modifications and alterations to this statement from time to time. Nevertheless, NBSPL is committed to providing independent and transparent recommendations to its clients, and would be happy to provide information in response to specific client queries.

Before making an investment decision on the basis of research report, the reader needs to consider, with or without the assistance of an adviser, whether the advice is appropriate in light of their particular investment needs, objectives and financial circumstances. There are risks involved in securities trading. The price of securities can and does fluctuate, and an individual security may even become valueless. International investors are reminded of the additional risks inherent in international investments, such as currency fluctuations and international stock market or economic conditions, which may adversely affect the value of the investment. Opinions expressed are subject to change without any notice. Neither the company nor the director or the employees of NBSPL accept any liability whatsoever for any direct, indirect, consequential or other loss arising from any use of the research report and/or further communication in relation to the research report. Here it may be noted that neither NBSPL, nor its directors, employees, agents or representatives shall be liable for any damages whether direct or indirect, incidental, special or consequential including lost revenue or lost profit that may arise from or in connection with the use of the information contained in the research report.

Copyright of this document vests exclusively with NBSPL.

Our reports are also available on our website

Registration granted by SEBI and certification from NISM in no way guarantee performance of NBSPL or provide any assurance of returns to investors.

Nirmal Bang Research (Division of Nirmal Bang Securities Pvt. Ltd.)

B-2, 301/302, Marathon Innova,
Opp. Peninsula Corporate Park
Off. Ganpatrao Kadam Marg
Lower Parel(W), Mumbai-400013
Board No. : 91 22 6723 8000/8001
Fax. : 022 6723 8010